

INDUSTRIAL 3D METROLOGY SOLUTIONS

ZGScan

Smart Handheld 3D Laser Scanner

Reverse Design and Simulation

Quality Control, Maintenance and Repair

Cultural Heritage Protection

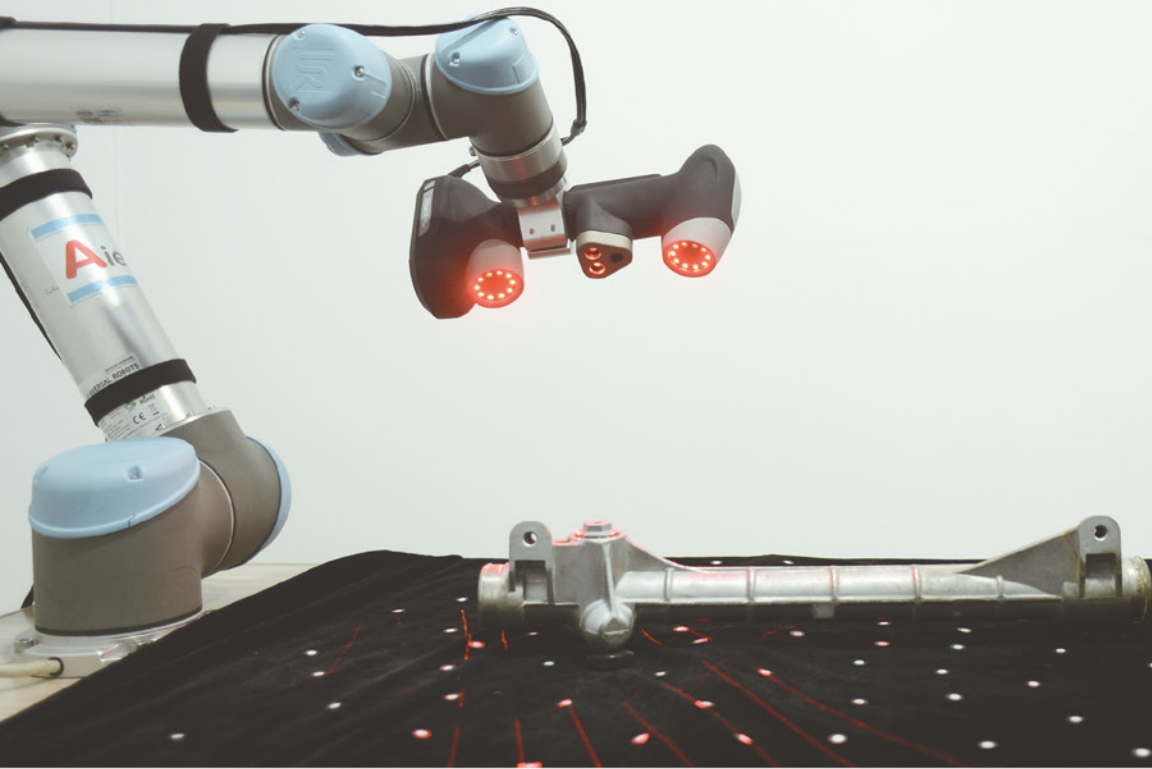
Multimedia & VR·AR

Education & Healthcare



ZG

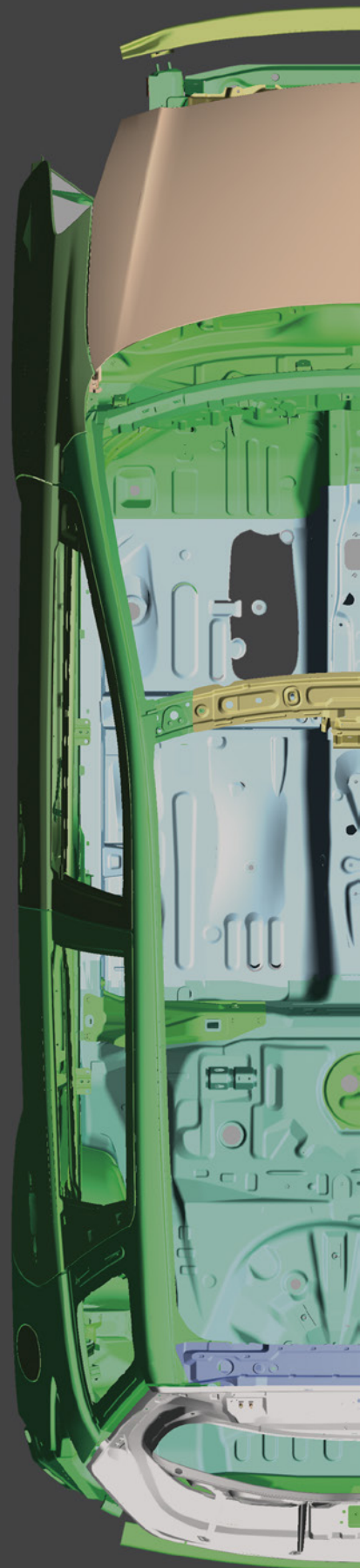
武汉中观自动化科技



3D Scanned data



3D Inspection



ZGScan series Smart Handheld 3D Laser Scanner has independent intellectual property rights, granted with multiple national invention patents and certified by National Institute of Metrology, China. Besides, ZGScan is able to collect data for 3D inspection, reverse design, 3D printing and other areas which greatly meet the needs of R&D and Quality Control department.

Application

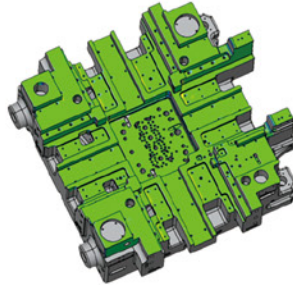


Automobile



- Competitive Analysis
- Vehicle Modification
- Custom-made of Inner Decorations
- Automobile Modeling
- Quality Control & Measure of Accessories
- Simulation & Finite Element Analysis (FEA)

Die & Mould



- Virtual Assembly
- Reverse Engineering
- Quality Control & Inspection
- Wear Analysis & Maintenance
- Fixture Design & Adjustment

Aerospace



- Fast Forming
- MRO & Damage Evaluation
- Aerodynamics & Stress Analysis
- Accessories & Detection and Adjustment on assembly

3D Printing

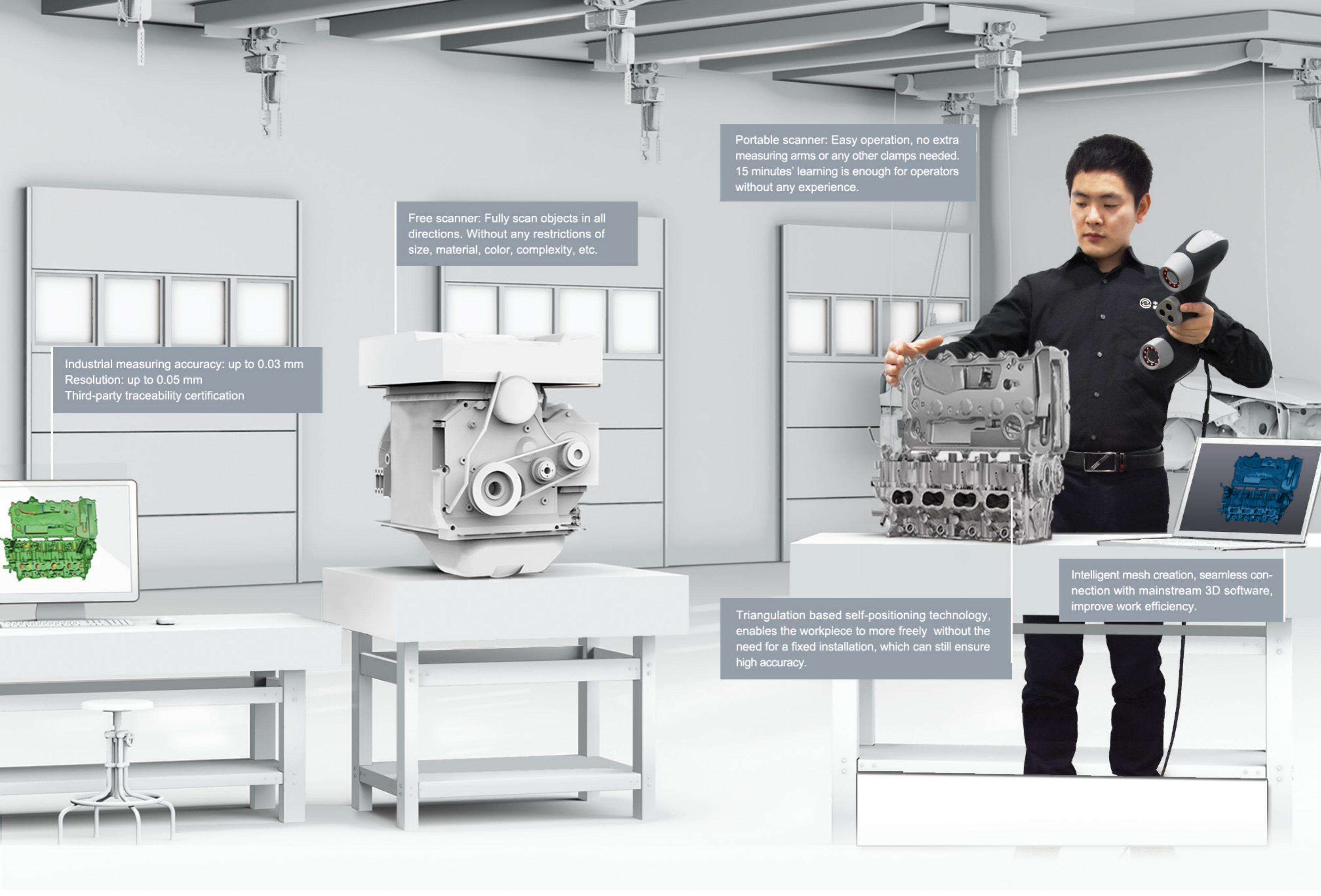


- Forming Test
- Reverse Design into CAD file of Original Objects
- Contrastive Analysis of Finished Products
- Directly Processing 3D Printing with Scanned Data

Other



Education & Scientific Research Medical Healthcare
 Cultural Relic & Furnishings Industrial Design
 Reverse Design VR·AR



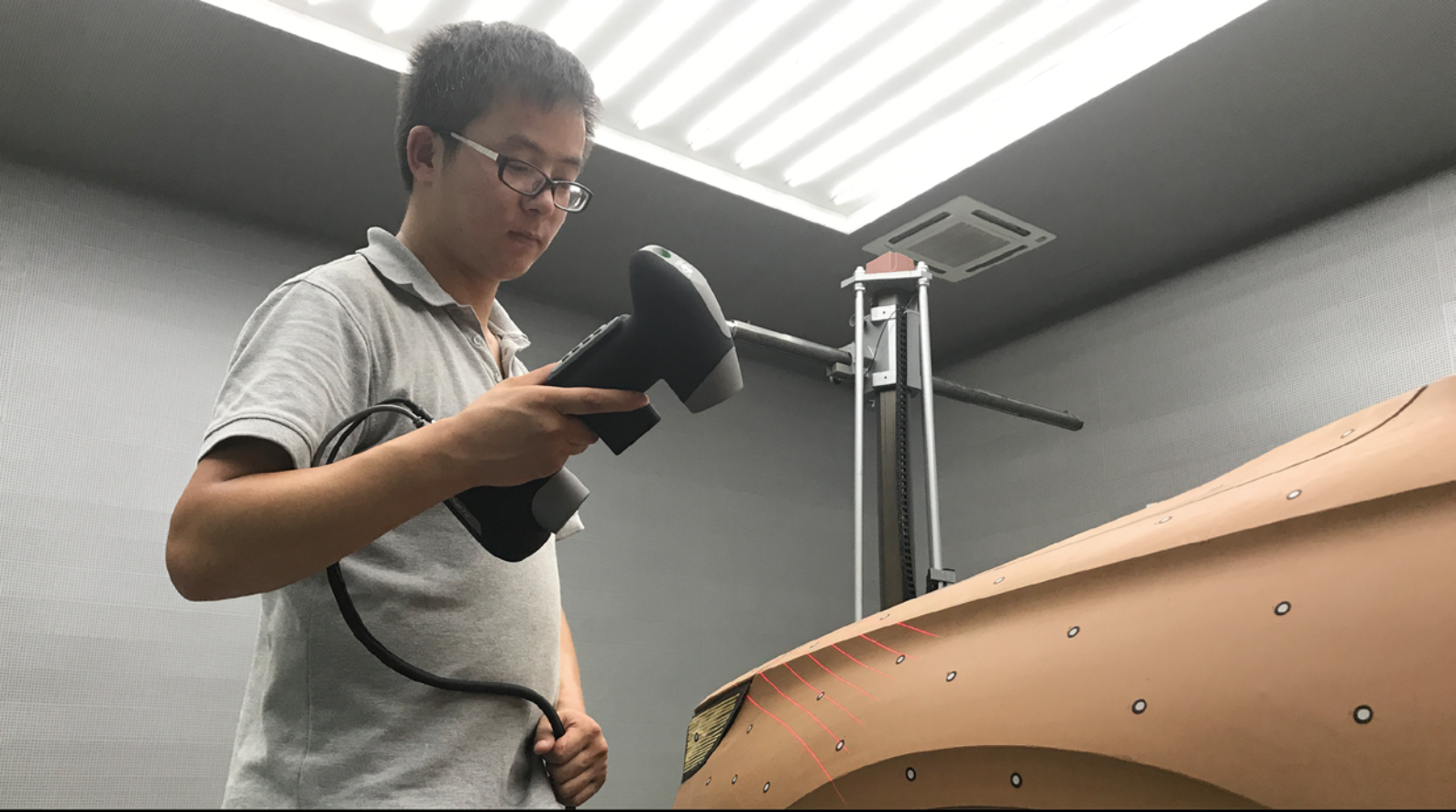
Industrial measuring accuracy: up to 0.03 mm
Resolution: up to 0.05 mm
Third-party traceability certification

Free scanner: Fully scan objects in all directions. Without any restrictions of size, material, color, complexity, etc.

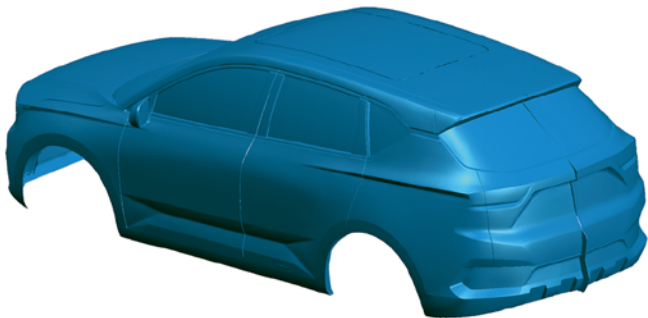
Portable scanner: Easy operation, no extra measuring arms or any other clamps needed. 15 minutes' learning is enough for operators without any experience.

Triangulation based self-positioning technology, enables the workpiece to more freely without the need for a fixed installation, which can still ensure high accuracy.

Intelligent mesh creation, seamless connection with mainstream 3D software, improve work efficiency.



ZGScan 3D Software Platform



Our 3D scanner can be matched up with ZGScan software platform which is a type of powerful processing software. The creative core algorithm helps users quickly acquire the 3D data of object and realtimely preview and edit the scanning data. The scanning process is visible and controllable real-timely, to effectively reduce the rework times and improve the working efficiency.

ZGScan

●
One key exports of acquired data - Compatible to mainstream 3D software.

CATIA, SolidWorks, NX, CREO(Pro/E), PolyWorks, Geomagic, 3ds Max, ZBrush

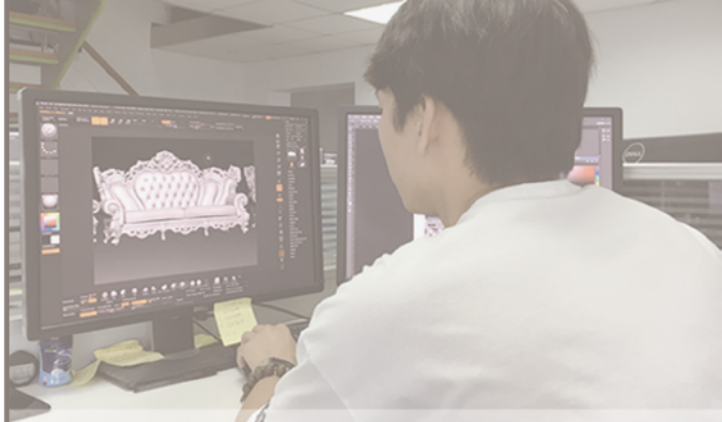


Standard Accessories

- **Scanner**
- **Equipment suitcase**
- **Calibration plate**
- **USB 3.0 cable**
- **1000 positioning targets**
- **One-year warranty--Premium**
- **USB flash drive (Containing software installation package.)**
- **Power Adapter**

Optional Accessories

- **laptop workstation**
- **Reusable positioning targets**
- **Annual calibration**
- **Multifunctional testing software**



Engineering Service

In addition to providing highly sophisticated products and technologies, we also provide one-stop engineering service. We provide engineering service recognized in the industry and to customer satisfaction in multiple 3D fields of industrial inspection and reversal design, cultural relics preservation and art design, healthcare and scientific research & education, 3D Printing and AR/VR...



After-sale Service

We adhere to the management idea "Customer First" and put customers' interests in top priority. As an equipment producer, we have the capability to handle all after-sale problems and guarantee to respond to customers' problems within 24 hours. With complete after-sale guarantee system, we can not only help customers solve product problems, but also provide customers with comprehensive solutions to help customers improve enterprise productivity and increase enterprise profits.



ZGScan 717



ZGScan 313

WEIGHT	0.83kg	
DIMENSION	310×147×80mm (12.2×5.8×3.1in)	
MEASUREMENT RATE	480,000 measurements/s	205,000measurements/s
SCANNING AREA	275×250mm (10.8×9.8in)	225×250mm (8.9×9.8in)
LIGHT SOURCE	7 laser crosses (+extra 1 line)	3 laser crosses (+extra 1 line)
LASER CLASS	Class II (eye-safe)	
RESOLUTION	up to 0.05mm (0.0020in)	
ACCURACY	up to 0.03mm (0.0012in)	
VOLUMETRIC ACCURACY	0.02+0.06mm/m (0.0008+0.0007in/ft)	0.03+0.06mm/m (0.0012+0.0007in/ft)
VOLUME ACCURACY (combined with PhotoShot)	0.02+0.025mm/m (0.0008+0.0003in/ft)	0.03+0.025mm/m (0.0012+0.0003in/ft)
STAND-OFF DISTANCE	300mm (11.8in)	
DEPTH OF FIELD	250mm (9.8in)	
OUTPUT FORMATS	.asc, .stl, .obj, .ply, .txt, .xyz etc., customizable	
CONNECTION STANDARD	USB 3.0	
OPERATING TEMPERATURE	-20~40°C	
OPERATING HUMIDITY	10~90%	
COMPATIBLE SOFTWARE	3D Systems(Geomagic Solutions)、InnovMetric Software(PolyWorks)、Dassault Systemes(CATIA V5\SolidWorks)、PTC(Pro/ENGINEER)、Siemens(NX\Solid Edge)、Autodesk(Inventor、Alias、3ds Max、Maya、Softimage)	

ZG Technology Co., Ltd.

Tel: +86 27 87741893

Service hotline: 400-027-7181

Address: BLDG A17-3,NO.555,WenHua Ave,Hongshan District,Wuhan,China

Email: marketing@zg-3d.com

Web: www.zg-3d.com

