

Intuitive and easy-to-use scan software

ezScan 2017 provides a step-by-step process of 'Scan', 'Align' and 'Merge' for the 3D scanning and the key features are represented by intuitive icons. In addition, ezScan 2017 enhanced the data editing and processing capabilities by adding the various options so any beginners who are new to the 3D scanners could use it easily.

Automatic scanning process

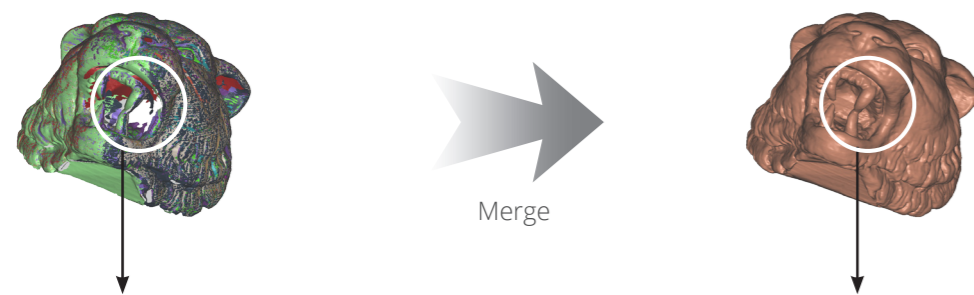
C500 is possible to set the brightness automatically by "One-Time" mouse button click without setting the brightness set-up for the scan object as before. The 'Batch Process' function allows users to perform all the functions from scan to data extraction at once, providing an easy and convenient scanning experience for all users.



Ease of scanning path generation

Depending upon the complexity of the scan object, it may require a different scanning path. Flexibility of the scanning path generation makes it easy for users to make their own scanning paths, allowing repeated data collection on various object sizes and shapes.

Enhanced scan data processing



The deep and narrow part of object is difficult to obtain scan data.

Recovers fine details from noisy or sparse scan data and intelligently detects holes, and automatically fills the holes.

API for customized integration

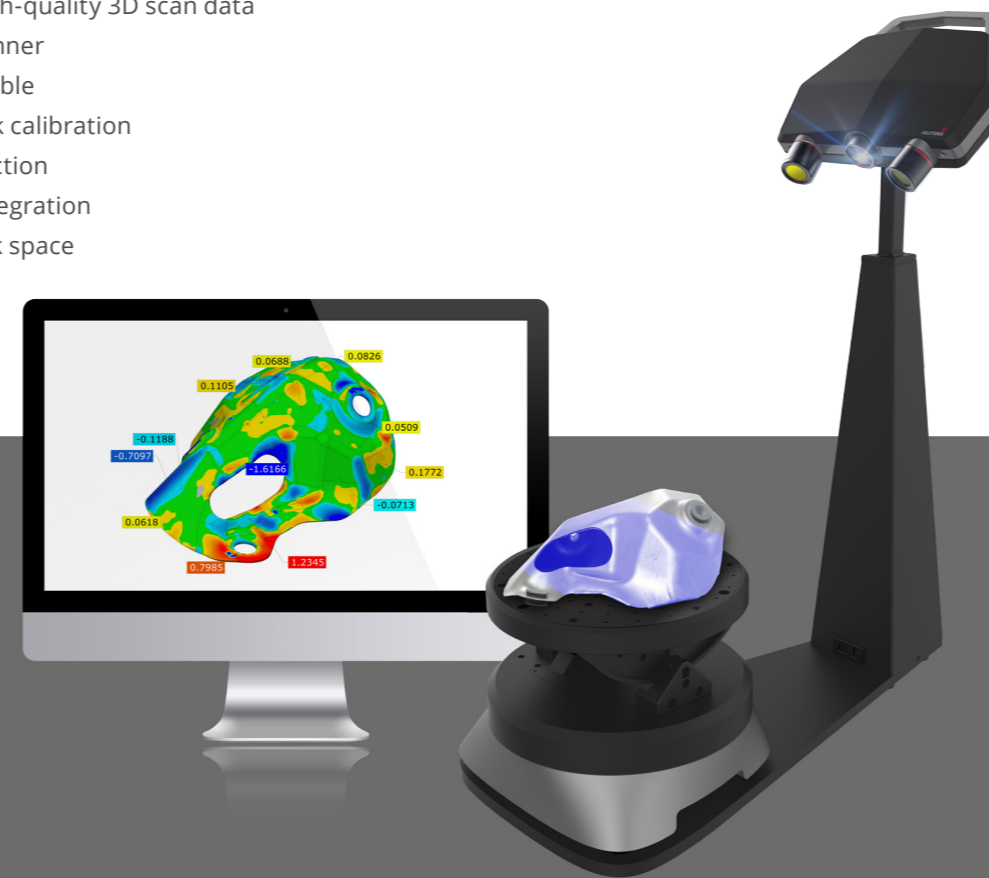
Users can use the API provided by Solutionix to control the C500 and process its scan data. In addition, it enables users to create their own scan application programs using various software and plug-in processes. The scanner head can also be used separately for various application fields and can be attached to robot arms or other instrumental devices.

Simple, Smart yet Powerful

Solutionix C500

THE BEST 3D SCANNER FOR MAKING A FAST, ACCURATE 3D DATA!

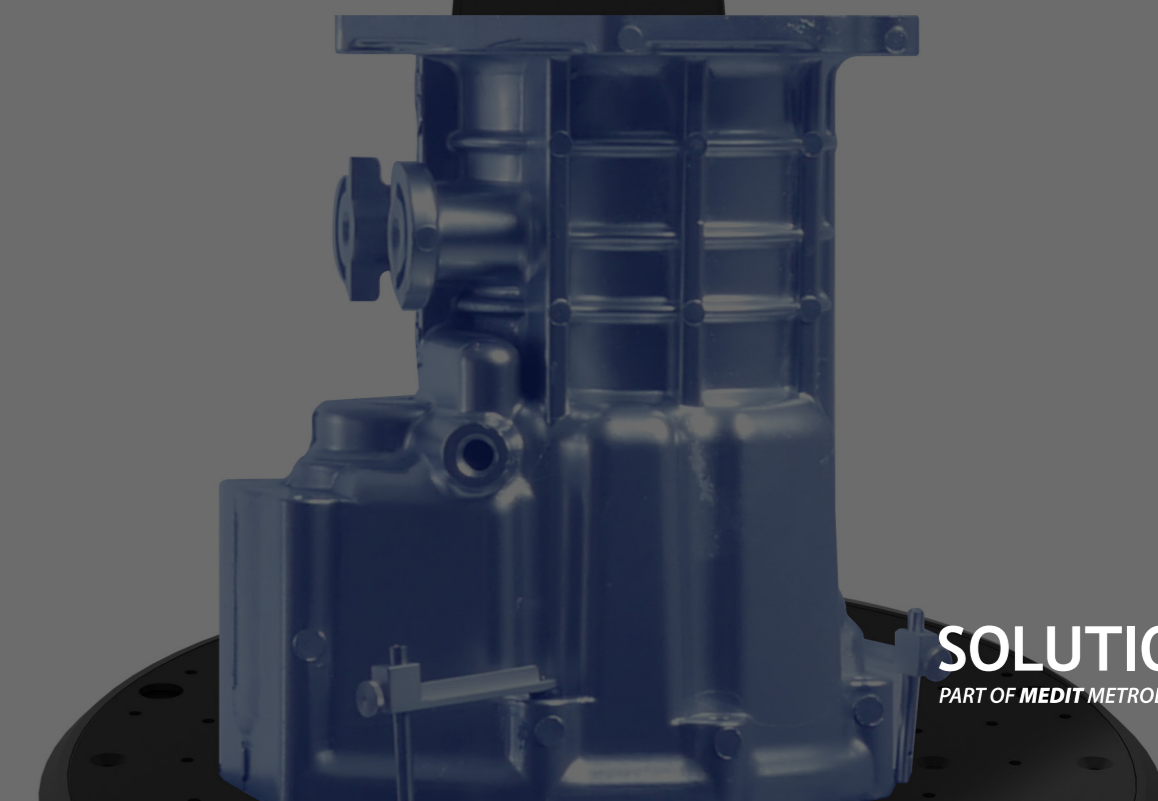
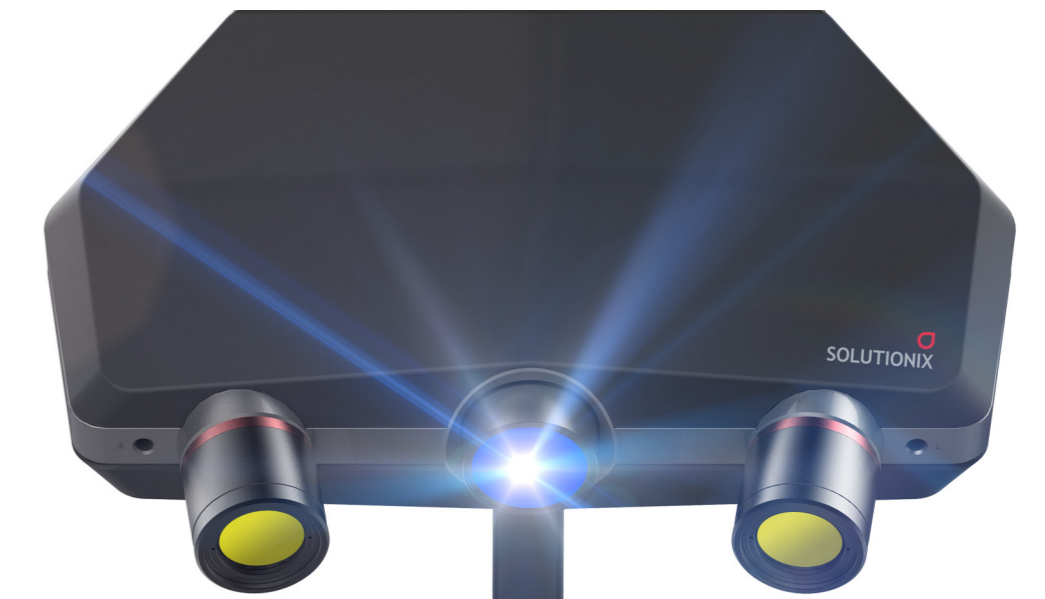
- Optimized for acquiring high-quality 3D scan data
- The most user-friendly scanner
- Synchronized 3-axis turn table
- Fully automated single-click calibration
- Color texture mapping function
- New API for customized integration
- Compact size: Fits into desk space



스캐너 & PC 사양

| 3D Scanner | Solutionix C500 | PC | Installation requirements | |
|-----------------------|--------------------------------------|--------------|---------------------------|------------------------|
| | | | Minimum | Recommended |
| Camera resolution | 2 x 5.0 MP | CPU | Intel i5 | Intel i7 |
| Point spacing | 0.028 - 0.157 mm | RAM | 16GB | Above 32GB |
| 3D Scanning area(FOV) | 90 / 175 / 350 / 500 mm | Graphic Card | Geforce GTX 660 | Above Geforce GTX 1060 |
| 3D Scanning principle | Phase-shifting optical triangulation | O/S | Windows 7,8,10 / 64bit | |
| Dimension | 315 x 270 x 80 mm (Scanner only) | | | |
| Weight | 2.3 Kg (Scanner only) | | | |
| Light source | Blue LED | | | |
| Interface | USB 3.0 B Type | | | |
| Power | AC 100-240V, 47-63 Hz | | | |

www.solutionix.com



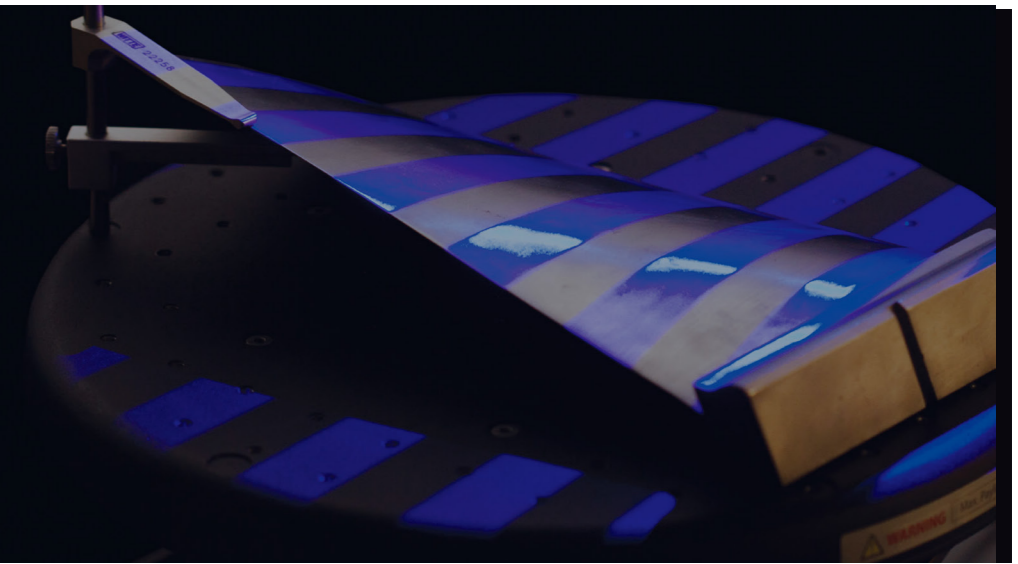
SOLUTIONIX
PART OF MEDIT METROLOGY GROUP

The most user-friendly 3D scanner

The Solutionix C500 is optimized for scanning small to medium sized objects. Possessing dual 5.0MP cameras, the C500 provides excellent data quality in high resolution. In addition, the high level of user-friendliness of the product makes the scanner even more attractive to customers.

WE PROVIDE HIGH QUALITY AND EASY-TO-USE 3D SCANNERS TO INDUSTRY

Solutionix industrial 3D scanners provide highly accurate and detailed 3D measurement data using Blue LED scanning technology and high-resolution twin-camera, enabling users to have fast and easy metrology experience.



Automatic calibration

Once the calibration panel is installed, clicking the calibration wizard will guide you through an automated calibration process. The whole calibration process may have been essential, but was difficult for users to follow. Now you will experience a genuinely user-friendly system and a fully automated procedure which leads to extreme convenience.



Automatic scanning & Active sync.

3D scanning does not always take much work. With a single mouse click, users can get their whole object scanning done very easily and quickly. A mouse click away for actively synchronizing the model and camera views, enabling users to recognize any scanning position and to add more scans where it may be needed.

Detachable scanner head

What if you're in need of scanning objects that exceeds the size or weight limit the TA300+ can handle? Don't worry, the scanner sensor can be easily detached from the C500 stand and be installed on a tripod or a different stand for manual scanning.



Optimized 3 axis automatic turntable

C500 is capable of performing scanning tasks easily and rapidly. Solutionix's 3-axis turntable (TA300+) can effectively capture areas beyond the pre-existing limits. TA300+ is optimized for automatic scanning of small and medium sized objects and can hold objects up to 10kg in weight. Thanks to the TA300+, it is possible to work in cramped conditions without much difficulty.



- ① Rotation Axis : Provides $\pm 180^\circ$ movement
- ② Rotation (Base) Axis : Provides $\pm 175^\circ$ movement
- ③ Swing Axis : Provides $\pm 40^\circ$ movement

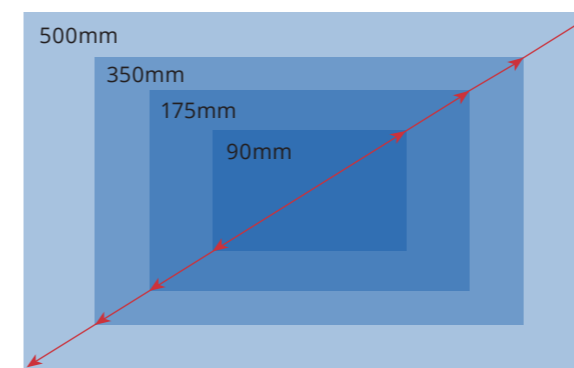
No targets or manual alignment needed

Targets are no longer needed for your scanning job with Solutionix C500. Using the pre-calculated information of the axis calibration, accurate alignment is carried out without the need for targets or manual registration.

Flexible scanning volume

The Solutionix C500 can be used in various industries, with a total of 4 different types of scan areas from 90mm to 500mm for maximum efficiency in each industrial sector. For the convenience of users, the C500 is designed to allow for easy changing of the measurement area by simply replacing the projector and camera lens.

| Scanning Area | Scanning Volume | Point Spacing |
|---------------|-----------------|---------------|
| FOV90 | 68 x 56 x 30 | 0.028 |
| FOV175 | 136 x 111 x 60 | 0.056 |
| FOV350 | 264 x 218 x 120 | 0.110 |
| FOV500 | 385 x 312 x 210 | 0.157 |

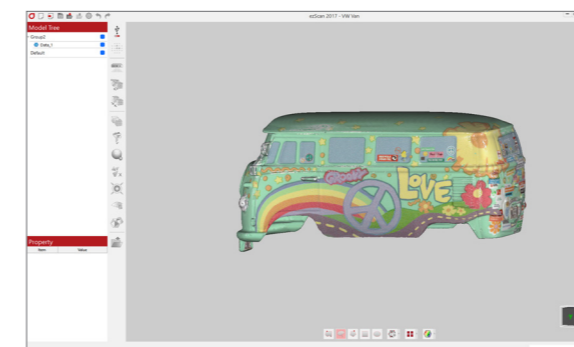


Maximized convenience

In order to maximize convenience, C500 was designed as a portable desktop scanner and can be easily built and placed on office desks. The scanner will allow users to perform scanning tasks without having to move away from the desk area.

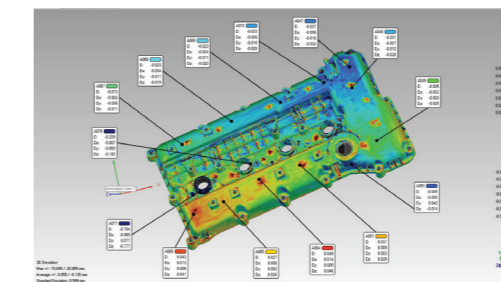
Color texture mapping is available

Solutionix C500 is mainly used in "Quality Inspection" or "Reverse Engineering" because of the ability to acquire high precision scan data easily and quickly. Solutionix C500 has added a new function to acquire high-resolution color information to utilize it in 3D printing, CG, and web-based real 3D data field.



Optimum solution for various applications

Solutionix C500 acquires the high-quality scan data quickly and easily and C500 is used as the solution for versatile applications in various industries

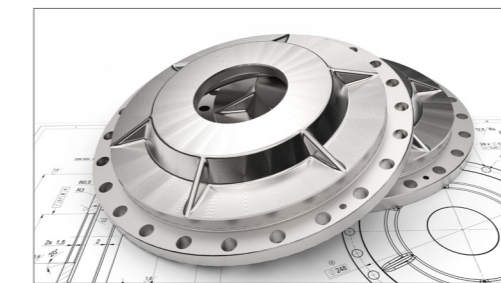


Quality Inspection

Compare measurements to the nominal CAD model and create color coded deviation maps of the errors in 3D.

> Application

- 3D correction & improvement
- Turbine blade inspection
- Geometric dimensioning and tolerancing (GD&T)

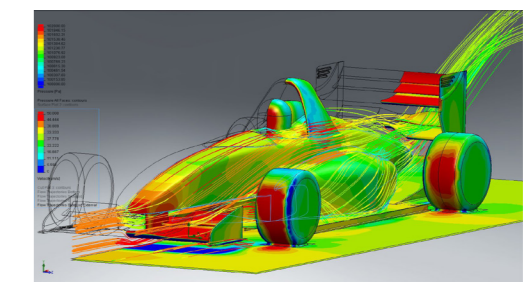


Reverse Engineering

Reverse engineer free-form surfaces and geometric objects from the point cloud data back to a variety of native CAD formats.

> Application

- 2D Drawing / 3D Modeling
- Styling & design modifications / system engineering
- Tooling design / manufacturing

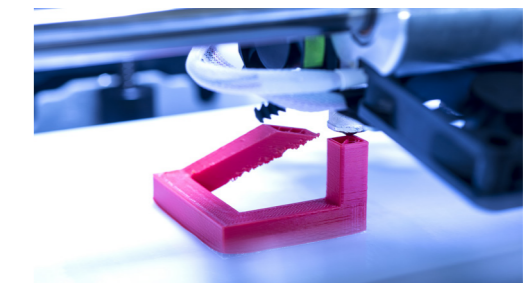


Analysis

Identify and find solutions to any potential structural & functional defect by modeling the system or product in a virtual environment.

> Application

- Digital simulation
- Computational fluid dynamic (CFD)
- Finite element analysis (FEA)



Scan to 3D Printing

Produce detailed pieces in various materials with seamless data integration.

> Application

- Rapid prototyping
- Direct manufacturing
- Healthcare / entertainment